

Continuous Casting Technology for Gold and Silver coin manufacture

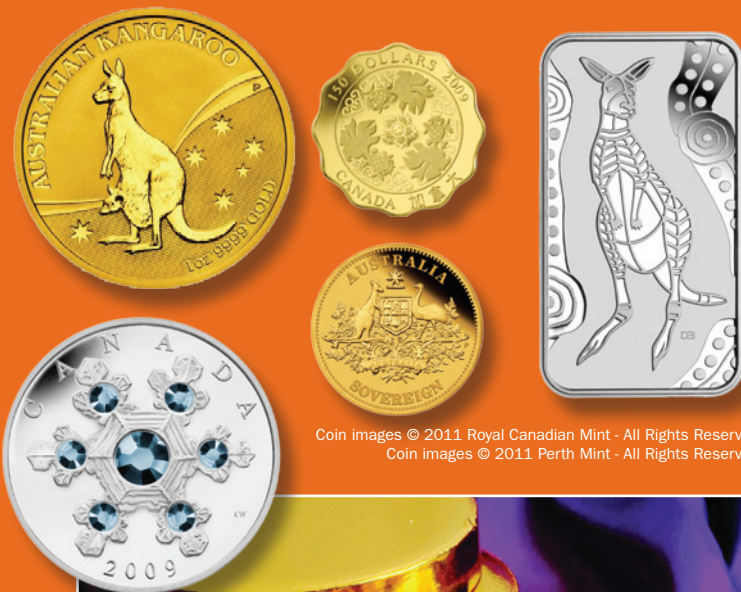
- Graphite crucible
- Electric resistance heating
- 20mm - 200mm strip width
- 3mm - 30mm strip thickness
- Billet up to 125mm dia.



RMT 200



RMJ/H 025 with In-Line Shear



Coin images © 2011 Royal Canadian Mint - All Rights Reserved
Coin images © 2011 Perth Mint - All Rights Reserved



Customer Reference installations include

- Royal Canadian Mint
- Perth Mint, Australia
- Shanghai Mint, China
- Royal Thai Mint
- Central Mint, Taiwan
- Sunshine Minting, USA
- Rand Refinery, South Africa
- Polish State Mint



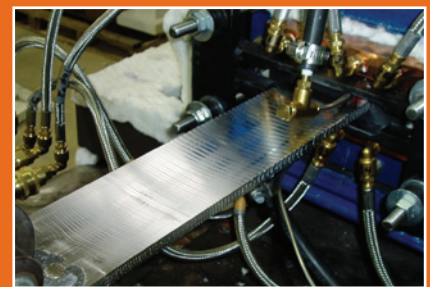
RT 650



RT 650



RMT 200



RMJ / H025

Equipment features

- Nitrogen gas protection inside furnace
- Long casting die life
- Long crucible life
- PLC control system
 - Production programmes stored in memory
 - Accurate and repeatable operation
- High quality continuous cast product

Materials

- GOLD
 - Fine (99.9 or 99.99)
 - 22 Carat, 18 Carat, 14 Carat
- SILVER
 - Fine (99.9 or 99.99)
 - 92.5% 90% 80% 50%



Coin images © Royal Thai Mint, Sunshine Minting Inc., Shanghai Mint – All Rights Reserved